

 [Print this page](#)

### Miscellaneous

\* Asterisks denote mandatory information

|   |                           |
|---|---------------------------|
| Name of Announcer *                         | CITY DEVELOPMENTS LIMITED |
| Company Registration No.                    | 196300316Z                |
| Announcement submitted on behalf of         | CITY DEVELOPMENTS LIMITED |
| Announcement is submitted with respect to * | CITY DEVELOPMENTS LIMITED |
| Announcement is submitted by *              | Enid Ling Peek Fong       |
| Designation *                               | Company Secretary         |
| Date & Time of Broadcast                    | 26-Sep-2013 17:11:12      |
| Announcement No.                            | 00043                     |

### >> Announcement Details

The details of the announcement start here ...

Announcement Title \*    Announcement by Subsidiary Company, CDL Investments New Zealand Limited on the completion of the first two stages of works at Stonebrook and commencement of works on Prestons Road

Description                    Please refer to the attached announcement issued by CDL Investments New Zealand Limited on 26 September 2013.

#### Attachments

 [26092013\\_CDLI\\_Stonebrook-Prestons.pdf](#)

Total size = **349K**  
(2048K size limit recommended)

[Close Window](#)

## CDL INVESTMENTS COMPLETES FIRST TWO STAGES OF STONEBROOK AND STARTS WORKS ON PRESTONS ROAD

Residential property developer CDL Investments New Zealand Limited (NZX: CDI) recently achieved two important milestones at its Canterbury subdivisions - the completion of all works as well as the settlement of the majority of sections at Stages 1 and 2 of its Stonebrook subdivision located at Rolleston and the commencement of work at its Prestons Road site.

The result of several years' planning and extensive work, Stonebrook Stages 1 and 2 comprise 90 sections of a total of over 400 sections across the 42 hectare site.

Stonebrook has been designed to offer a range of section sizes and housing densities which will appeal to a wide range of buyers. Every section also has access to fibre broadband services over Enable's new network. Details of available sections and pricing can be found at the dedicated website <http://www.stonebrook.co.nz/>.



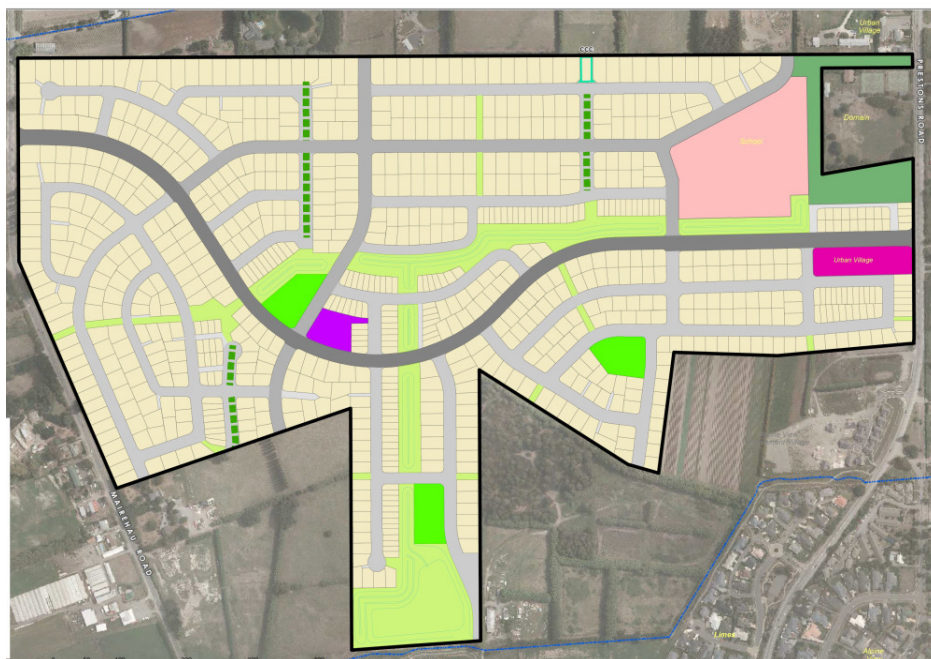
CDI Managing Director Mr. B K Chiu said that completion of the first two stages was a significant milestone.

"The demand for Stonebrook has been strong and we are delighted that we have been able to mark the completion of the first two stages of Stonebrook. This has been a major project for us this year and will ensure that CDI better its 2012 results" he said.

Mr. Chiu noted that Stage 3 has practically been sold out with settlements to occur in 2014 and that Stage 4 was due to be released very shortly.

"The need for high quality sections in Rolleston remains and we are confident that Stage 4 will also sell out in the near future", he said.

CDI also owns 75 hectares of residential-zoned land located between Mairehau and Prestons Roads, 6.5 kilometres from the Christchurch CBD. It is part of Prestons, a dynamic new residential subdivision located in the north east of Christchurch. Prestons is ideally located to connect to public transport, is close to Christchurch city yet is also adjacent to the recreational area of Bottle Lake Forest.



*Master Plan for CDI's development at Prestons*

Prestons is designed to be a sustainable urban village, is 203-hectares in total size and will become a residential precinct for over 2,500 houses and 8,000 residents. It is a joint venture development between Ngāi Tahu Property, CDL Land New Zealand Ltd. and Foodstuffs South Island Ltd.

Mr. Chiu confirmed that CDI had obtained planning consents and earthworks would start by the end of 2013.

“Much like our Stonebrook subdivision, we believe sections at Prestons will strongly appeal to a wide range of buyers seeking high quality residential sections within easy reach of Christchurch” he said.

## **ENDS**

Issued by CDL Investments New Zealand Ltd

Any inquiries please contact:  
B K Chiu  
Managing Director  
CDL Investments New Zealand Ltd  
(09) 913 8077